

Our impact on global higher education

AdvanceHE
5 YEARS SUPPORTING THE SECTOR

5
YEAR
ANNIVERSARY

Helping higher
education be the
best it can be



We help higher education be the best it can be by unlocking the potential of its people and institutions.

I'm delighted to share this document, as Advance HE marks its 5th anniversary. Here we showcase the impact we're having across the globe, across country-wide systems and for institutions and individuals working and studying in higher education.

We are immensely proud of this work and the institutions and organisations we have partnered with and continue to learn about the evolution of higher education in different geographical contexts, from these partnerships.

We see the huge amount of effort the sector is putting in to create inclusive working and learning environments that lead to successful graduate outcomes, high-performing staff and institutions that provide huge value to their communities, economies and the world.

Our international work aims to build on these successes. Higher education is a global system and across the world, organisations are facing shared challenges albeit in distinct contexts. Advance HE is uniquely positioned to facilitate the co-creation of solutions and expertise to overcome these challenges. We are fulfilling our purpose to 'help higher education be the best it can be by unlocking the potential of its people and institutions.' by working across national borders to share understanding and successful practice throughout a growing global membership community, adding value to our members wherever they are located.

We hope you feel inspired reading the success stories. Our highly knowledgeable and skilled experts, from a wide range of backgrounds and experiences, stand ready to help and look forward to working with you.



Anne Moore
Assistant Director, International Solutions
Advance HE

Meet the Team:



Kristian Rumble
Head of Membership (Global)
kristian.rumble@advance-he.ac.uk

Kristian's role involves managing and supporting members in the UK and globally. Kristian has extensive experience working internationally, having previously worked for Advance HE as International Partnerships Manager, working with governments, organisations, institutions and individuals from around the world, helping them to enhance performance and achieve their goals. With deep knowledge and understanding of global HE, Kristian has worked collaboratively to expand Advance HE's reach across the Middle East and North Africa, Europe and parts of Asia.



Daniel Sheratte
International Partnerships Manager
Daniel.sheratte@advance-he.ac.uk

Daniel supports higher education providers across the world to achieve their strategic goals, with particular experience in learning and teaching enhancement, Fellowship and equality, diversity and inclusion. Daniel also works with national governments, ministries and other agencies across the world to support developmental projects across a range of Advance HE's activities. Daniel has a keen interest in internationalisation, having previously supported international student recruitment and experience at Manchester Metropolitan University in a professional services role.



Ian Hall AFHEA
Head of Membership – International
Ian.Hall@advance-he.ac.uk

Ian supports higher education providers across the world to engage with Advance HE's membership, with particular experience in learning and teaching enhancement, Fellowship and accreditation. Ian also works with national governments, ministries and other agencies across the world to support developmental projects across a range of Advance HE's activities. Ian has a keen interest in digital learning, having previously worked for an e-Learning provider and supported a range of online and mobile learning projects. Ian is an Advance HE Associate Fellow.



Tonya Watts
Head of Partnerships (Ireland)
tonya.watts@advance-he.ie

Tonya works directly with institutions in Ireland to support them in their development and enhancement goals. She has worked for over 7 years in Irish higher education. Prior to this role, she was an EDI Project Manager developing and embedding EDI initiatives including gender equality action plans, employee resource groups, and bespoke training. With experience working collaboratively across the Irish sector, Tonya is interested in helping institutions find solutions and pathways to improved governance, leadership, teaching and learning, and EDI.

Working with Advance HE

We support education ministries and institutions to be world-class providers of higher education, through the provision of developmental and enhancement services to achieve and sustain high standards. We work to:

- + transform HE leadership for the new world
- + enhance teaching and learning for student success
- + evolve higher education governance
- + drive organisational cultural change to support equality, diversity, inclusion and wellbeing
- + enhance research in higher education.



I'm delighted to be part of this development journey with my colleagues to advance the quality of teaching and learning at ADU. Through this collaboration, we will ensure our graduates have the attributes valued by employers which will support them throughout their career journey. Our faculty fellows' hard work reflects their professional commitment to delivering an engaging learning environment and providing high-quality education. This collaboration reinforces our capabilities both individually and as an institution. This is a great achievement for our whole community and faculty members whose work is being recognized and rewarded as well as students who enjoy a world-class academic experience."

Professor Philip Hamill, Associate Provost, Research and Academic Development, Abu Dhabi University – and Principal Fellow

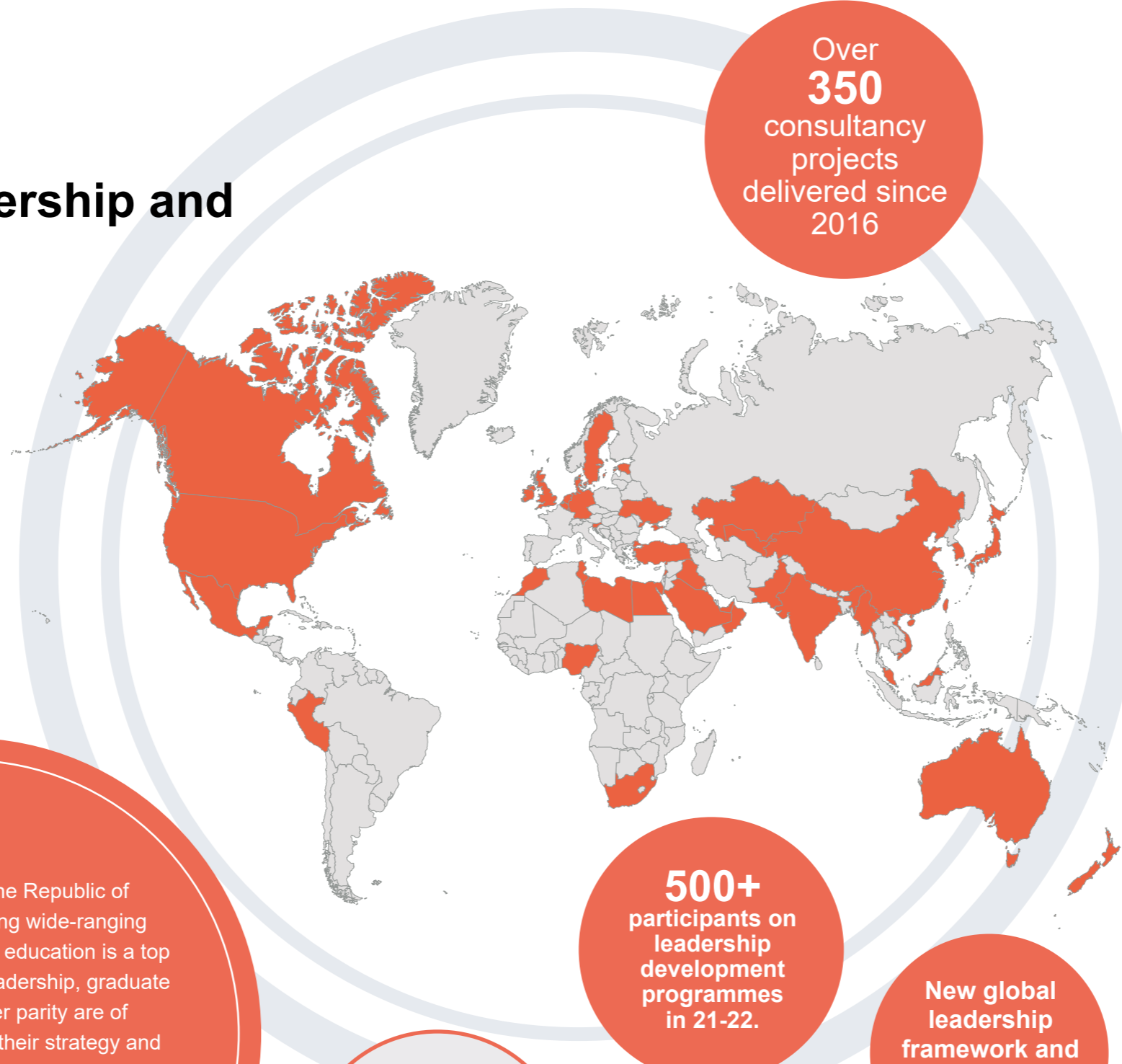
Advance HE works with you to achieve your strategic goals:

- + Climbing world rankings (e.g. QS and THE) through improvements against key metrics
- + Inclusive cultures which support staff and student equality, diversity, inclusion and wellbeing
- + Developing your staff to be world-class practitioners
- + Curricula which enable excellent graduate outcomes
- + Recognition for research excellence
- + Embedding sustainable approaches aligned to the UN Sustainable Development Goals
- + Strategic approaches to Transnational Education and internationalisation, increasing your student and staff pool of recruitment
- + Financial stability through new streams and reinforcing and evaluating existing ones
- + Supporting your civic mission.



Transforming leadership and management

Confident, capable leaders adapt, grow and diversify their talents, their teams and their institutions to respond to future challenges. Advance HE has been working with leaders in higher education for over 20 years. Many of the leaders in the sector have taken part in development programmes with us, which have helped shape their career trajectories. We support leaders to achieve institutional strategic goals through expert guidance, enhancement services and bringing peers together.



Over **350** consultancy projects delivered since 2016

Case study: Ukraine

Working closely with the Institute of Higher Education (part of the National Academy of Educational Sciences) and the British Council we designed a multi-faceted Leadership Development Programme for 40 universities delivered over a three-year period to support the national initiative to enhance leadership capacity and support reform. Institutional change projects were undertaken in collaboration with UK institutions.

[Read more](#)

“

The government of the Republic of Uzbekistan is conducting wide-ranging reform in the country and education is a top priority. The themes of leadership, graduate outcomes and gender parity are of particular importance in their strategy and clearly Advance HE is particularly well-placed in these areas to help with the Minister's and sector's work.”

Rachel Ireland, British Council Country Director, Uzbekistan

We have delivered over 50 cohorts of the Top Management Programme with over 1,000 alumni

500+ participants on leadership development programmes in 21-22.

New global leadership framework and survey being developed

Over 40 reports, resources and publications published since August 2021

“

The Academic Leadership Programme was very useful because after the workshop I am able to perceive problems more easily and also to react to them better, maybe more lastingly. I am grateful to the organizers for a new network of like-minded companions with similar challenges.”

Assistant Professor, Dr. Franc Dimc, Vice-Dean for Academic Affairs, University of Ljubljana

Case Study: Peru

Experts from Advance HE have completed a project that could soon see Peruvian and UK universities award joint and dual degrees valid in both countries. The TNE roadmap was developed by Advance HE on behalf of the British Council which has been working closely with Peru's DIGESU (Direccion General de Educacion Superior Universitaria) – the body responsible for advancing higher education in the country.

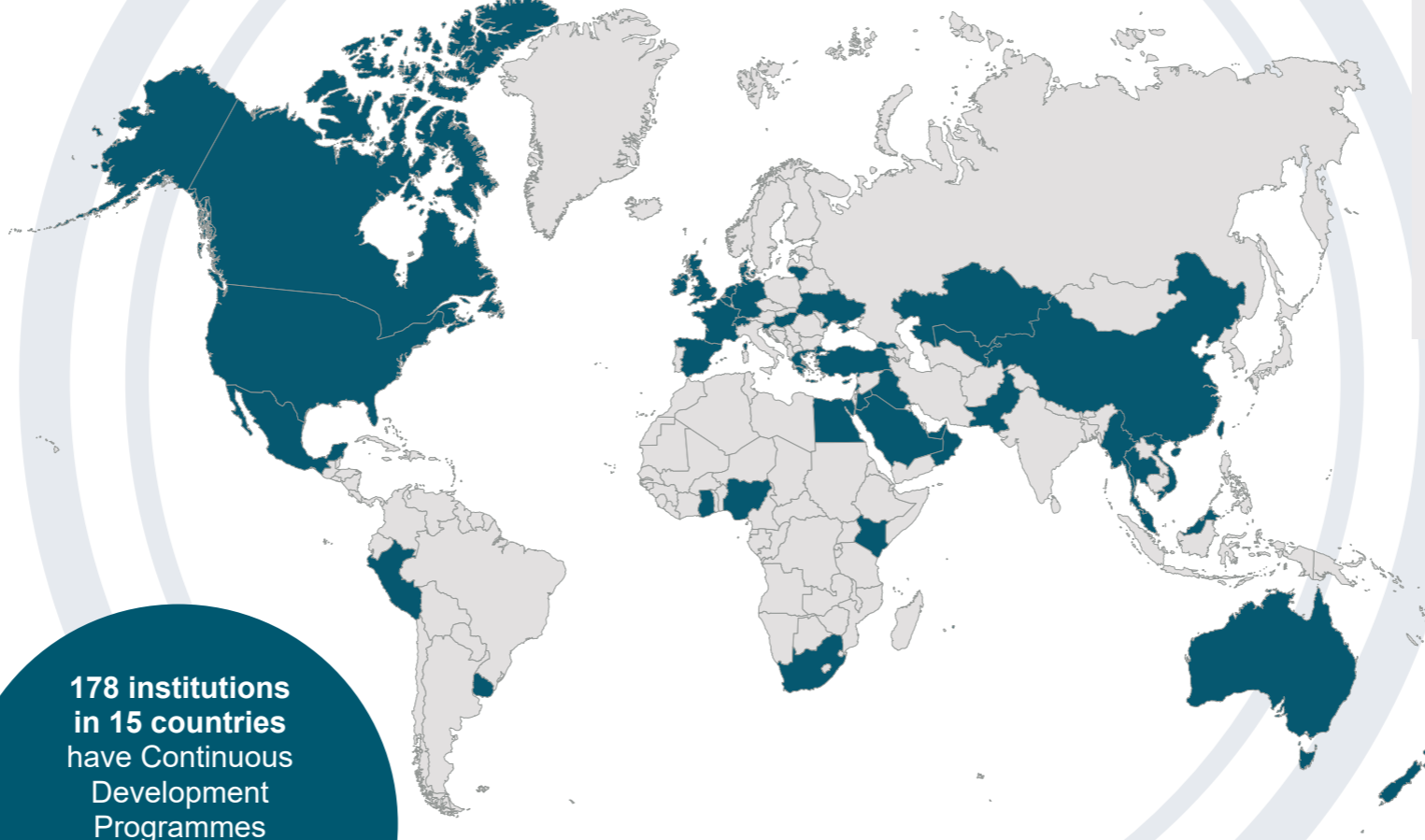
[Read more](#)

Enhancing teaching and learning for student success

Measures on student retention and graduate outcomes are in sharper focus and in some cases being linked to funding of programmes and courses. Sectors around the world are placing greater emphasis on teaching excellence to meet these metrics and to support national demands for a highly skilled workforce and internationalisation of higher education.

We help to develop and deliver transformational and sustainable strategies, build capacity and capability to improve performance for organisations, teams and individuals, and tailor our solutions to meet your priorities and those of the wider sector.

Over 6,000 participants on teaching and learning events in 2021-22



178 institutions in 15 countries have Continuous Development Programmes accredited against the Professional Standards Framework

400+ teaching and learning consultancy and in-house development projects with institutions across the globe delivered since 2016

Case study: Thailand

Advance HE has been working with Walailak University, Thailand since 2018 to develop a 'culture of teaching', where staff could work together to share best practice and continuously develop their teaching practice.

- + 30% increase in student retention
- + 93% of teaching staff being rated at 4/5 or better by their students
- + 90% of Walailak University teaching staff have achieved Fellowship.

[Read more](#)

“

There is now a culture of teaching at Walailak University. Before this work, staff did not talk about teaching, whereas now you can hear them discussing their teaching in everyday conversations. Student learning is at the heart of all our work.”

Associate Professor Dr. Surin Maisrikrod, Vice President for Global Engagement and Faculty Development, Walailak University

“

The work with Advance HE is demanding but ultimately very rewarding. The ASU-rise scheme, which is aligned with the PSF, has supported many of ASU's activities, not least our QS overall rating of '5 Stars' which includes the Academic Development Criterion that also scored '5 Stars'. These are fantastic achievements!”

Dr. Faiza Zitouni, Assistant Vice President for Development Affairs, Applied Science University (ASU), Kingdom of Bahrain

Case Study: United Arab Emirates

Abu Dhabi University (ADU) partnered with Advance HE in 2017 to implement its employability strategy with a vision of developing a culture of learning and teaching excellence in its faculty as the catalyst for improving student outcomes and experience. Concurrently, ADU also worked with Advance HE to upskill faculty teaching competence and learning leadership in the university.

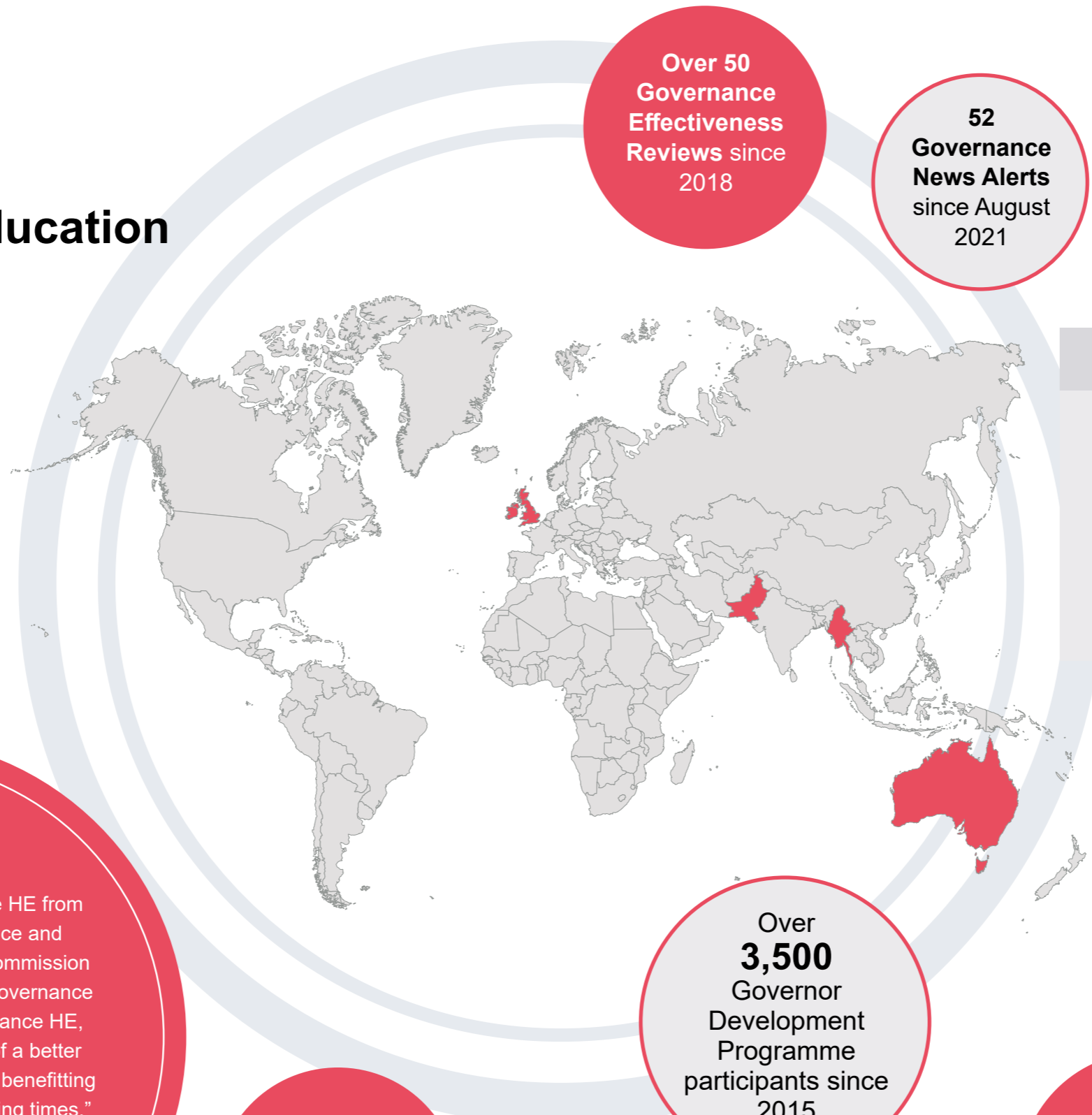
Following the successful implementation, ADU:

- + graduates have been **rated the most employable in the United Arab Emirates** in the *Times Higher* 'Graduate Employability Rankings'
- + was ranked **1st in the UAE for employability, 2nd in the GCC and 170th globally**
- + was ranked **1st for teaching in the UAE** in *Times Higher* 2022 World University rankings
- + received the **prestigious 5 Star QS rating** for the first time.

[Find out more](#)

Evolving higher education governance

Good governance is critical to delivering impactful HE and confidence and trust for stakeholders. Yet we know that understanding what is effective in your context is needed more than ever to navigate uncertainty and be fit for the future. We build on our unparalleled 20 year track record of supporting and developing governors, governance professionals, institutions and systems of governance across the world to support boards to lead successful institutions.



Over 50
Governance
Effectiveness
Reviews since
2018

52
Governance
News Alerts
since August
2021

Case study: Pakistan

On behalf of the Higher Education Commission and with support from the British Council, we undertook an audit to review the effectiveness of governance to inform the development of effective governance policy, practice, and processes in support of a high performing HE sector.

[Read more](#)



We are delighted to have Advance HE from the UK providing advice, guidance and support to the Higher Education Commission of Pakistan in reshaping of better governance mechanisms. With the help of Advance HE, over 200 universities will be part of a better leadership and governance system benefitting around two million students in coming times.”

Nishat Riaz MBE, Global Head of Higher Education Systems and Internationalisation, British Council

16 reports,
resources and
publications
published since
August 2021

Over
3,500
Governor
Development
Programme
participants since
2015

19 in-house
governor
development
sessions and
board away days
facilitated since
2020

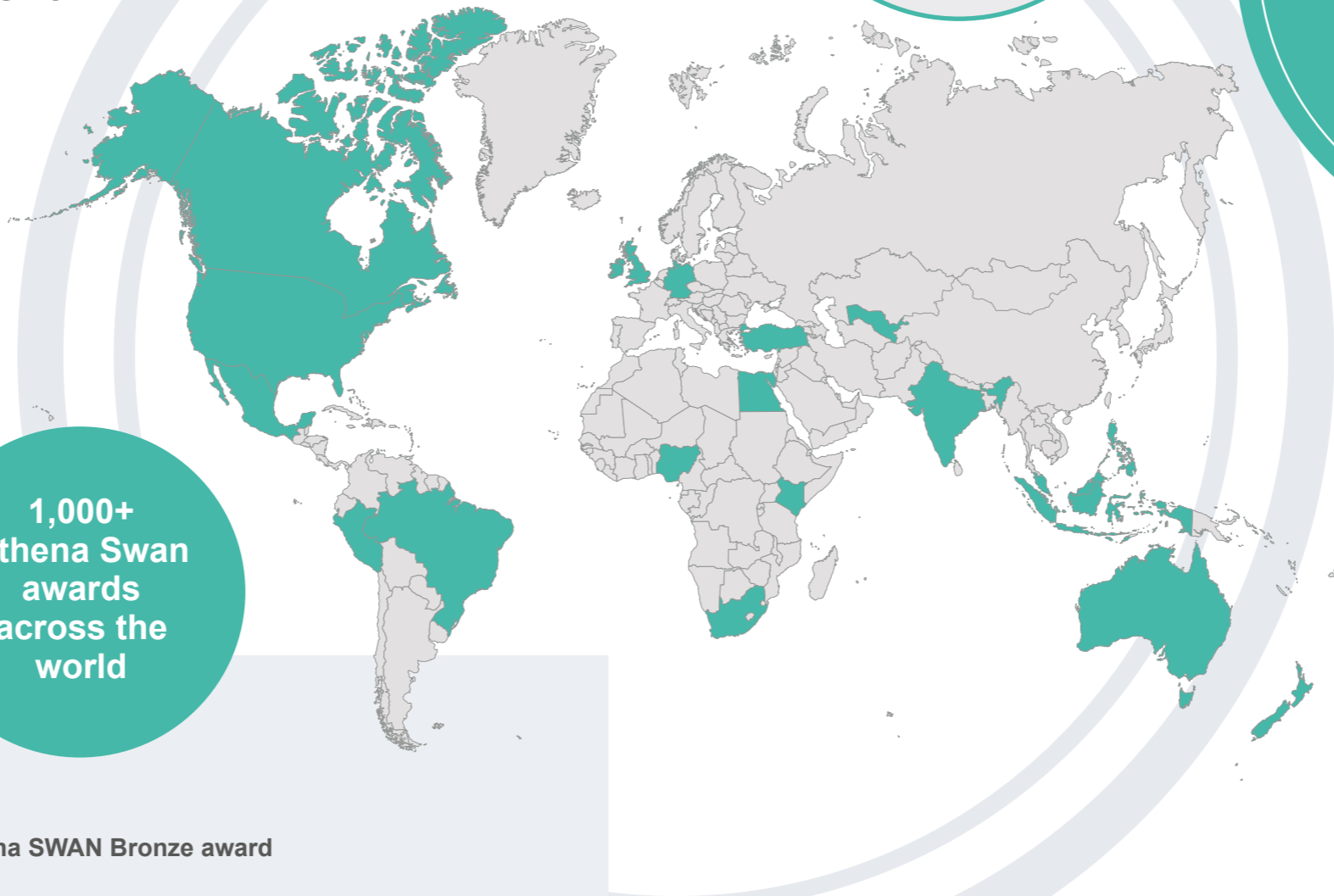
95
governance
consultancy
projects
delivered since
2019

Driving progress in equality, diversity and inclusion

Creating a culture and environment of dignity, respect and wellbeing is at the heart of our values as an organisation and provides the framework for the work that we do with our members and clients.

Our equality, diversity and inclusion (EDI) services are built on a legacy of expertise in EDI. Having worked with numerous HE institutions, we understand the range of challenges.

1,000+ Athena Swan awards across the world



By the end of 2023 and celebrating 10 years since its launch, more than 10,000 women will have participated in Aurora

“ I have been impressed by this group of women who have taken up the fight of moving forward the women in science agenda from behind, and in front of, the scenes whose effort has allowed us to carry out this first step in the mentoring programme in Peru.”
Adriana Delgado, Education and Society Manager British Council Peru

“ The Athena SWAN framework offers institutions an opportunity to show progress and to demonstrate leadership. I am delighted to see the success rate this year and hope we can build on this as we move forward.”
Simon Harris TD, Minister for Further and Higher Education, Research, Innovation and Science in Ireland

Athena Swan Ireland
+ 112 award holders in Ireland

SAGE Australia
+ 43 institutions have achieved an Athena SWAN Bronze award

SEA Change USA
+ Advance HE supported the American Association for the Advancement of Science (AAAS) in creating its STEM Equity Achievement (SEA) Change programme.

Dimensions Canada
+ DIMENSIONS was initiated by the Government of Canada in 2018 and is overseen by NSERC (Natural Science and Engineering Research Council of Canada). Advance HE is supporting the pilot programme, which includes 17 post-secondary institutions.

GATI
+ We are working in partnership with the British Council and the Department of Science and Technology, Government of India on GATI (Gender Advancement for Transforming Institutions). This project aims to introduce a gender equality framework for women in STEMM research in India.

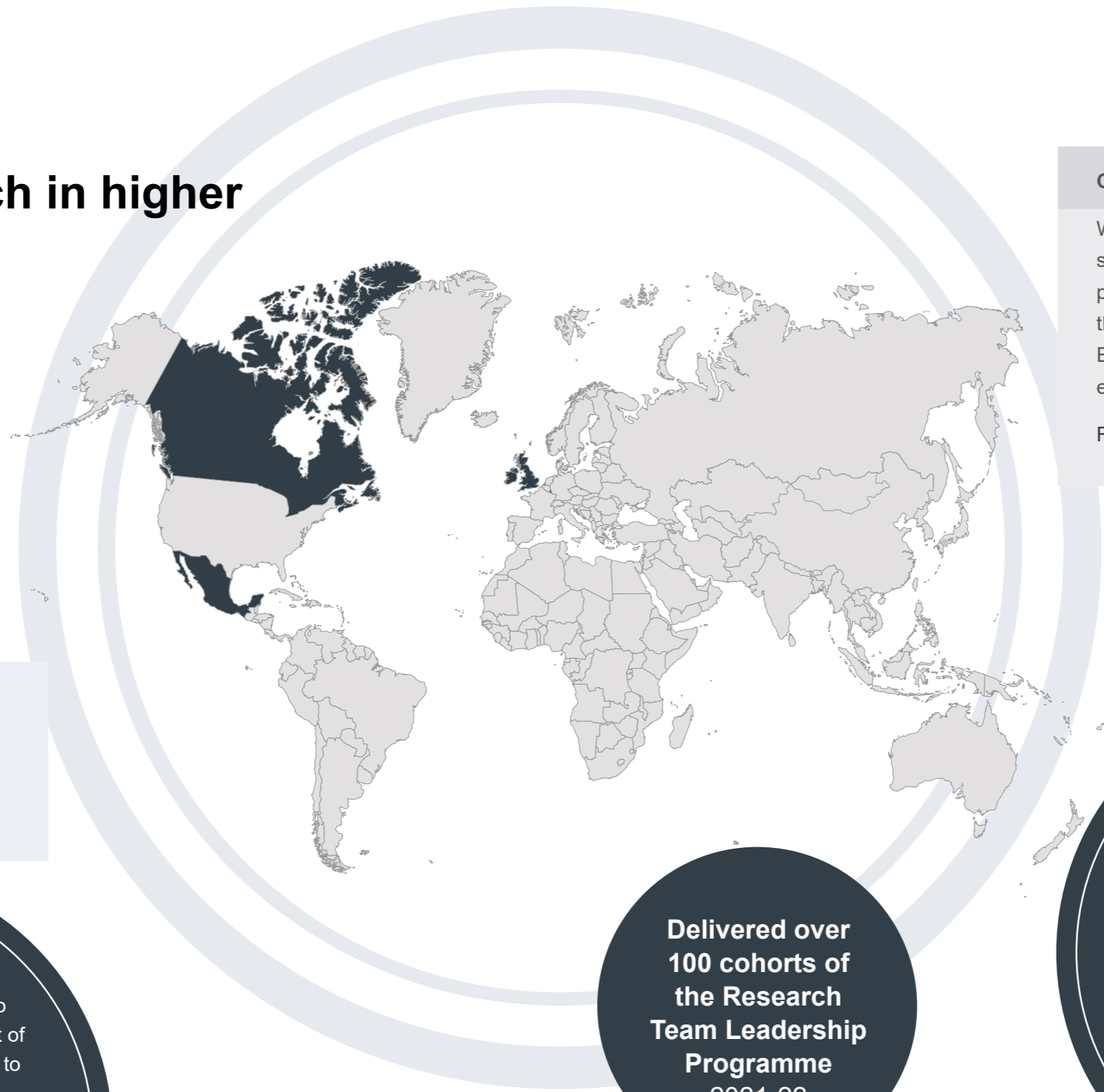
Case Study: Bahrain

We delivered a remote 'She Leads' programme to female academics at the University of Bahrain which saw female leaders from across the Kingdom join together to take part in this innovative and forward thinking development initiative. Advance HE's experience in delivering women in leadership programmes, led to the delivery of a series of interlinked webinars for up to 40 female leaders from across Bahrain including Heads of academic departments, administrative divisions and research institutes.

[Read more](#)

Enhancing research in higher education

Research culture encompasses the behaviours, values, expectations, attitudes and norms of our research communities. Advance HE supports institutions and individuals to enhance and develop their research culture. Offering audits, professional development, bespoke consultancy and equality charters to tackle the challenges research faces.



114 institutions participated in the Postgraduate Research Experience Survey (PRES), the Postgraduate Taught Experience Survey (PTES) and the UK Engagement Survey (UKES).

Case study: Mexico

We have recently developed a bespoke online survey tool (in Spanish) using the JISC Surveys platform to support research being undertaken by the Inter-American Organisation for Higher Education (IOHE) and the Quebec Government exploring HE leadership capabilities in Mexico.

[Read more](#)



We found the PRES a great way to ensure we had a tried and tested set of questions that were able to be used to benchmark our institution. It also provided us with the flexibility to add some institution specific questions to better understand our cohort of Higher Degree by Research candidates."

Kate Swanson,
Senior Development Manager
The University of Queensland

**Delivered over
100 cohorts of
the Research
Team Leadership
Programme
2021-22**

**12 research
consultancy
projects since
2020**

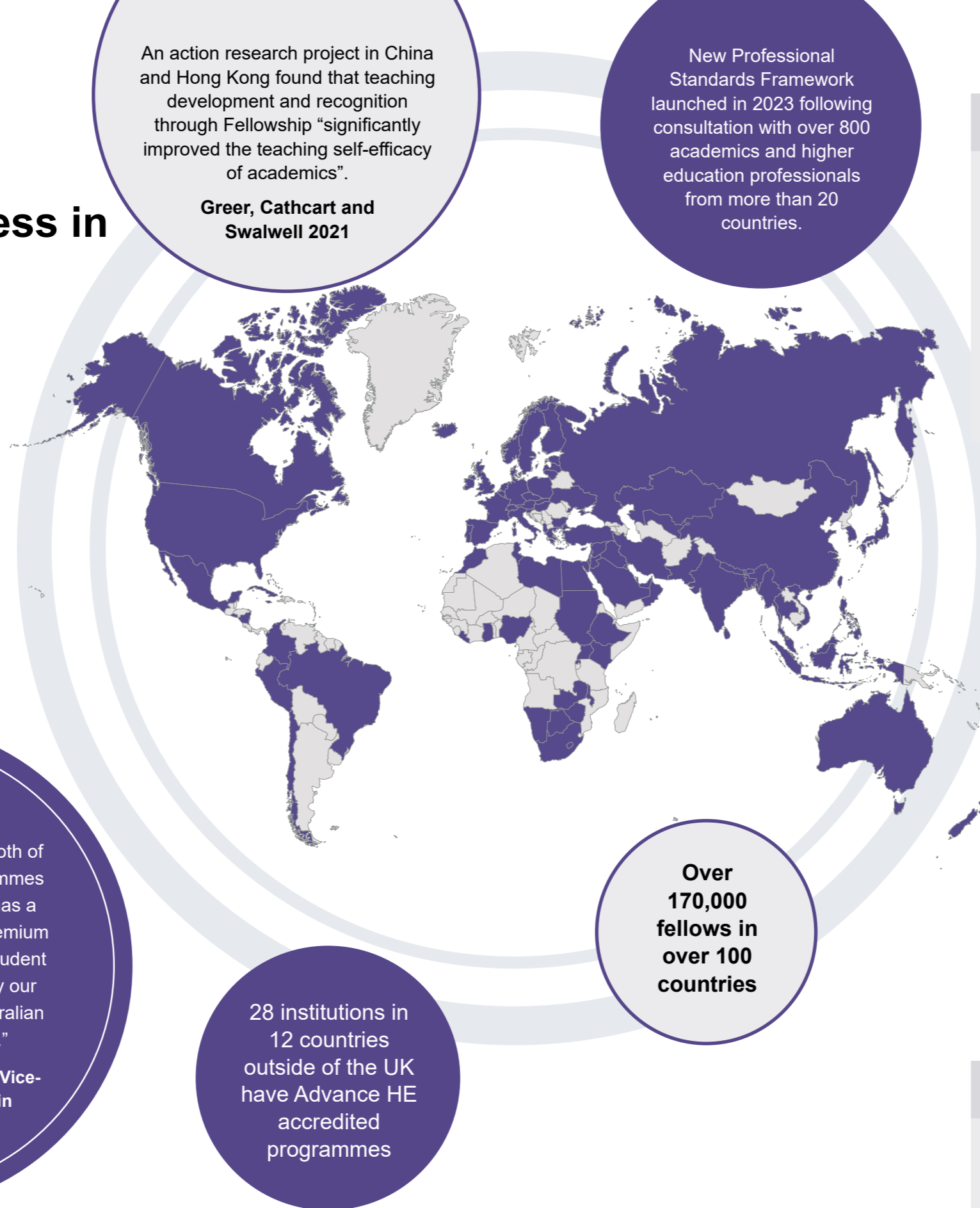


This is exactly the programme that every academic should complete in their first five years, and repeat at a later stage. It is absolutely excellent and just what I have been looking for over a number of years."

**Research Team Leadership participant
Dr Valerie Pinfield, Head of Chemical
Engineering, Loughborough University**

Recognising success in higher education

Advance HE supports institutions globally to have their in-house teaching staff development programmes accredited to meet the Professional Standards Framework for Teaching and Supporting Learning in HE requirements and allow the automatic award of Fellowship to successful participants. We provide support to institutions to guide them through the accreditation process. We also provide online standardisation exercises, to support those assessing and mentoring Fellows as well as conducting external moderation.



Case study: Australia

Deakin University has achieved Advance HE accreditation for its DeakinHE Reflective Practice Pathway and the Graduate Certificate of Higher Education (Learning and Teaching) programmes, meaning that participants who successfully complete will now achieve Fellowship. Over 280 staff have now been recognised at Fellows.

[Read more](#)

Case study: New Zealand

Massey University ran a programme to support teaching staff, some of whom are also alumni, to be recognised as Associate Fellows. Some of the staff who took the course gave us their thoughts.

[Read more](#)

How we can support you

Consultancy and Enhancement Services

We are solution orientated and strive to enhance organisational performance and drive positive change by bringing people together for sector collaboration, being supportive and enabling, working as an enhancement body and being a critical friend. We develop bespoke solutions based on your context and goals, examples include strategy development and curriculum reviews.

[Find out more](#)

High-impact tailored staff development

We work closely with you to deliver high-impact solutions equipping your staff with the required skills, knowledge and confidence to thrive in their roles and to develop their capabilities both individually and collectively.

[Find out more](#)

Insights and research

Our expert team can provide, qualitative, quantitative or mixed-methods offers, underpinned by sector-wide datasets from our student surveys and our sector-leading higher education statistical reports.

[Find out more](#)

Contact us

If you would like to find out more about how we can support you, please contact: solutions@advance-he.ac.uk



“

Experiential learning was at the heart of the programme and whilst we still have more work to do, the programme offered a great opportunity for staff to gain a shared understanding of appreciative leadership and how the cohorts could create momentum to champion new ideas and approaches. The extended modular approach over which the development took place enabled deeper reflection and learning and working with real-life scenarios (adapted for confidentiality) helped development as a leader and manager.”

**Dr Sally Jackson, Chief People Officer at
Sheffield Hallam University**

Advance HE enables excellence in higher education, helping it be the best it can be.

Advance HE supports institutions in the areas of excellence in education, transformational leadership, equality and inclusion and effective governance. This is delivered through membership benefits (including accreditation of teaching, equality charters, research, knowledge and resources), programmes and events, Fellowships, awards, consultancy and enhancement services and student surveys.knowledge and resources).

AdvanceHE

5 YEARS SUPPORTING THE SECTOR

5
YEAR
ANNIVERSARY

Innovation Way, York Science Park,
Heslington, York, Y010 5BR

Advance HE is a company limited by guarantee registered in England and Wales no. 04931031. Registered as a charity in England and Wales no. 1101607. Registered as a charity in Scotland no.SC043946. Is a company limited by guarantee registered in Ireland no. 703150.